



SofTap® Permanent Cosmetic Colors

♦ No Guessing
♦ No Fear

♦ No FD&C or D&C Dyes
♦ No Mixing

Brow and Liner Colors

New! Cool Palette

009-Platinum

010-Bashful Blonde

020-Hazelnut

030-Fawn

040-Cappuccino

050-Café Vienna

060-Expresso

070-Earth

080-Mahogany

090-Charcoal

Light

Medium

Dark

New! Warm Palette

015-Amber

100-Caramel

110-Milk Chocolate

120-Bordeaux

130-Copper

140-Cocoa

150-Chocolate Truffle

160-Royal Fudge

170-German Chocolate

180-Café Ole

331-Black Orchid

Fabulous Lip Tones

Neutrals

Mauve/Pink



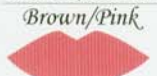
230-Sweet 16



220-Innocence



290-Cupids Kiss



250-Pastel Rose



260-Secret Passion



280-Jamaican Rum



285-Havana Girl

Natural Pink



240-Victorian Rose



186-Tickle Me Pink



185-Valentine



200-Mango Obsession



190-Peaches 'N Cream



210-Blushed Petals

Pigment Exfoliator

New!



Special I-Liner FX

300-Irish Moss



310-Jade Granite

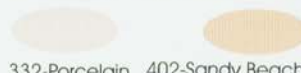


320-Blue Lagoon



333-Tempting Teal

Camouflage Colors



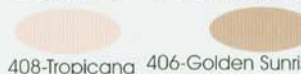
332-Porcelain 402-Sandy Beach



401-Pearl 404-Salmon



403-Seashell 405-Cocoa Butter



408-Tropicana 406-Golden Sunrise

407-Tahitian Tan

Correction-Aids

(for the make-over enthusiast)

New!

328-Orange-Aid
(use to prime blue
or gray)

New!

329-Lime-Aid
(use to prime red
or orange)

330-Lemon-Aid

(formally called Lighten Up)
(Use to prime pink or purple)

Colors may vary slightly from the color chart.